

# BOUTIQUE



NEW





TORNITE



**TORNIG26**  
u: 1  
cm: 8,5x32 ↑  
C: ±1230g  
Ø: ±100h  
Wood scent



**TORNIP26**  
u: 1  
cm: 10x28 ↑  
C: ±920g  
Ø: ±80h  
Wood scent



**TORNIC26**  
u: 1c (2u)  
cm: 3,6x30 ↑  
C: ±185g/u  
Ø: ±20h  
Wood scent  
\*F/22



**TORNIG62**  
u: 1  
cm: 8,5x32 ↑  
C: ±1230g  
Ø: ±100h  
Wood scent



**TORNIP62**  
u: 1  
cm: 10x28 ↑  
C: ±920g  
Ø: ±80h  
Wood scent



**TORNIC62**  
u: 1c (2u)  
cm: 3,6x30 ↑  
C: ±185g/u  
Ø: ±20h  
Wood scent  
\*F/22



**TORNIG2**  
u: 1  
cm: 8,5x32 ↑  
C: ±1230g  
Ø: ±100h  
Wood scent



**TORNIP2**  
u: 1  
cm: 10x28 ↑  
C: ±920g  
Ø: ±80h  
Wood scent



**TORNIC2**  
u: 1c (2u)  
cm: 3,6x30 ↑  
C: ±185g/u  
Ø: ±20h  
Wood scent  
\*F/22

\*Canelobres recomanats per a cada referència (col·lecció completa pàg.100)  
Candelabros recomendados para cada referencia (colección completa pág.100)  
Recommended candelholders for each reference (full collection p.100)





**MURA26**  
u: 1c (2u)  
cm: 6,5x17,5/6,5x15,5↑  
C: ±375g/±325g  
⊙: ±45h/±40h



**MURAC26**  
u: 4  
cm: 2,5x26↑  
C: ±80g/u  
⊙: ±10h/u  
\*F/20



**MURA53**  
u: 1c (2u)  
cm: 6,5x17,5/6,5x15,5↑  
C: ±375g/±325g  
⊙: ±45h/±40h



**MURAC53**  
u: 4  
cm: 2,5x26↑  
C: ±80g/u  
⊙: ±10h/u  
\*F/20



**MURA3**  
u: 1c (2u)  
cm: 6,5x17,5/6,5x15,5↑  
C: ±375g/±325g  
⊙: ±45h/±40h



**MURAC3**  
u: 4  
cm: 2,5x26↑  
C: ±80g/u  
⊙: ±10h/u  
\*F/20

\*Candelobres recomanats per a cada referència (col·lecció completa pàg.100)  
Candelabros recomendados para cada referencia (colección completa pág.100)  
Recommended candleholders for each reference (full collection p.100)





NEW



**MURA1**  
u: 1c (2u)  
cm: 6,5x17,5/6,5x15,5↑  
C: ±375g/±325g  
⊙: ±45h/±40h



**MURA67**  
u: 1c (2u)  
cm: 6,5x17,5/6,5x15,5↑  
C: ±375g/±325g  
⊙: ±45h/±40h



**MURA66**  
u: 1c (2u)  
cm: 6,5x17,5/6,5x15,5↑  
C: ±375g/±325g  
⊙: ±45h/±40h



**MURA6**  
u: 1c (2u)  
cm: 6,5x17,5/6,5x15,5↑  
C: ±375g/±325g  
⊙: ±45h/±40h



**MURAC1**  
u: 4  
cm: 2,5x26↑  
C: ±80g/u  
⊙: ±10h/u  
\*F/20



**MURAC67**  
u: 4  
cm: 2,5x26↑  
C: ±80g/u  
⊙: ±10h/u  
\*F/20



**MURAC66**  
u: 4  
cm: 2,5x26↑  
C: ±80g/u  
⊙: ±10h/u  
\*F/20



**MURAC6**  
u: 4  
cm: 2,5x26↑  
C: ±80g/u  
⊙: ±10h/u  
\*F/20

MURA

\*Candelabros recomanats per a cada referència (col·lecció completa pàg.100)  
Candelabros recomendados para cada referencia (colección completa pág.100)  
Recommended candelholders for each reference (full collection p.100)



TRAPEZI  
u: 1c (3u)  
cm: 9,5x7,5↑  
C: 3x ±500g





KAND26  
u: 1c (2u)  
cm: 7,8x19,5↑  
C: ±120g/u  
⊙: ±8h/u



ANDRÉ GIDE La porta estreta  
T HEMINGWAY Torrents de primavera  
CO DI VERDURA Una infància siciliana  
THOMAS MANN Els caps bescanviats  
RT GRAVES La filla d'Homer  
R. R. TOLKIEN El Silmaril·lion  
CE Retrat de l'artista adolescent  
Dotze d'Itàlia  
ANDRÉ GIDE L'humoralista



TWIST



**TWIST1**  
u: 1  
cm: 3,7x30↑  
C: ±380g  
Metal scent

**TWIST2**  
u: 1  
cm: 3,7x30↑  
C: ±380g  
Metal scent

**TWIST3**  
u: 1  
cm: 3,7x30↑  
C: ±380g  
Metal scent

**TWIST4**  
u: 1  
cm: 3,7x30↑  
C: ±380g  
Metal scent

(1)



**TWIST1**  
u: 1  
cm: 3,7x30↑  
C: ±380g  
Metal scent

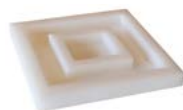
**TWIST2**  
u: 1  
cm: 3,7x30↑  
C: ±380g  
Metal scent

**TWIST3**  
u: 1  
cm: 3,7x30↑  
C: ±380g  
Metal scent

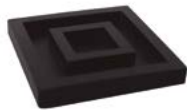
**TWIST4**  
u: 1  
cm: 3,7x30↑  
C: ±380g  
Metal scent

(4)

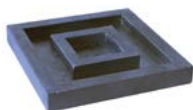
NEW



**FTWIST1**  
u: 1  
cm: 12x12↑  
C: ±130g



**FTWIST4**  
u: 1  
cm: 12x12↑  
C: ±130g



**FTWIST**  
u: 1  
cm: 12x12↑  
C: ±380g





NEW REFILL



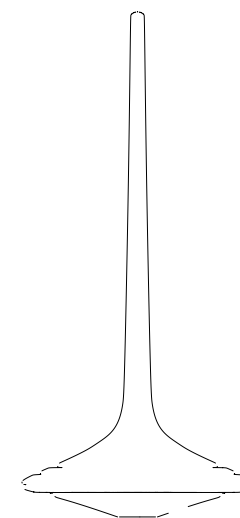
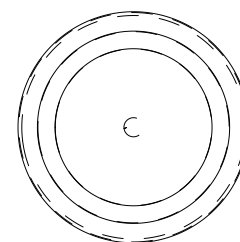
**MATCHR**  
 u: 1  
 cm: 0,5x24 ↑  
 C: +0,5g/u  
 Ⓞ: ± 1h/u  
**REFILL**  
 1 capsa: 20 espelmes  
 1 caja: 20 velas  
 1 box: 20 candles



**MATCH**  
 u: 1  
 cm: 0,5x24 ↑  
 C: +0,5g/u  
 Ⓞ: ± 1h/u  
 1 capsa: 20 espelmes i 2 canelobres  
 1 caja: 20 velas y 2 candelabros  
 1 box: 20 candles & 2 candleholders







**BALLA26**  
u: 1  
cm: 16,5x37↑  
C: +530g  
Ⓞ: +30h



(26)



(60)

**PANOTP**  
u: 1  
cm: 9,5x9,5↑  
C: ±165g/u



(26)



(60)

**PANOT**  
u: 1  
cm: 20x20↑  
C: ±1260g/u





1862  
160 ANNIVERSARY



**CORB1**  
u: 1  
cm: 19x8,5x9↑  
C: ±1150g  
⊙: ±40h  
Patchouli & Earthy scent



**CORB2**  
u: 1  
cm: 13,5x11,5x17↑  
C: ±2050g  
⊙: ±60h  
Patchouli & Earthy scent



**CORB3**  
u: 1  
cm: 12x7,5x18↑  
C: ±1260g  
⊙: ±70h  
Patchouli & Earthy scent



Bronze Delta  
ADI Awards 2022



**ATMOSPAC**  
u: 1 pack (5u)  
cm: 2,2x25 ↑  
C: ±50g/u  
⊙: ±6h/u  
(Recanvi, recambio, replacement)



**ATMOSPAC**  
u: 1  
cm: 12x40 ↑  
C: ±790g  
⊙: ±6h/u  
Inclou 5 espelmes  
Incluye 5 velas  
5 candles included



**ATMOSPHO**  
u: 1  
cm: 17x22,5 ↑  
C: ±1570g  
⊙: ±8h  
Inclou REPHOTOM  
Incluye REPHOTOM  
REPHOTOM included



**REPHOTOM**  
u: 1  
cm: 9x13,5 ↑  
C: ±200g  
⊙: ±8h  
(Recanvi, recambio, replacement)

**100% recycled**

Peça única feta a mà amb fibres recuperades.  
Pieza única hecha a mano con fibras recuperadas.  
Unique and handmade product made out of re-utilized fibers.





**PAMPOLRG**  
u: 1  
cm: 25x12,5↑  
C: ±2080g

*(Recanvi,  
recambio,  
replacement)*



**PAMPOLRP**  
u: 1  
cm: 20x9↑  
C: ±920g

⊙: ±25h  
*(Recanvi,  
recambio,  
replacement)*



**PAMPOL/G**  
u: 1  
cm: 129↑  
C: ±2080g/±4600g



**PAMPOL/P**  
u: 1  
cm: 30↑  
C: ±920g/±530g

⊙: ±25h





(1)



(26)

**SHELL**  
 u: 1  
 cm: 28x17,5↑  
 C: ±1380g  
 Ⓞ: ±60h



(1)



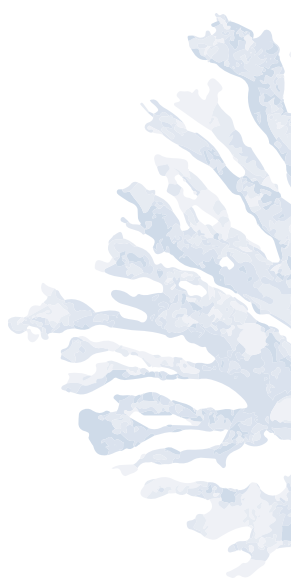
(60)



(26)

**WHALE**  
 u: 1  
 cm: 36x13↑  
 C: ±1050g/±1060g  
 Ⓞ: ±60h





(1)



(26)



(41)

**CORAL**  
u: 1  
cm: 18x13 ↑  
C: ±1010g  
Ø: ±50h



(1)



(26)



(41)

**CORALC**  
u: 1  
cm: 6x32,5 ↑  
C: ±140g  
Ø: ±12h  
\*F/22

\*Canelobres recomanats per a cada referència (col·lecció completa pàg.100)  
Candelabros recomendados para cada referencia (colección completa pág.100)  
Recommended candleholders for each reference (full collection p.100)





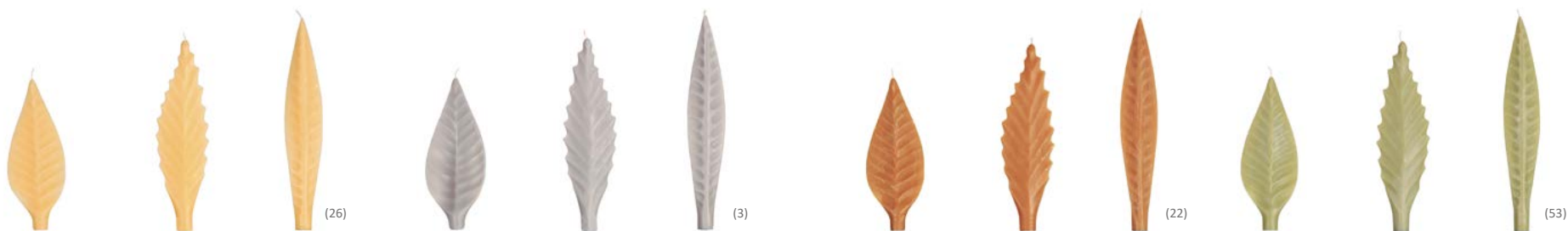






CANELOBRE F5/22 INCLÒS · CANDELABRO F5/22 INCLUIDO · F5/22 CANDEHOLDER INCLUDED

<b>FULLP26</b> u: 1 cm: 9x48 ↑ C: ±120g / ±390g ⊙: ±4h Rhubarb scent	<b>FULLM26</b> u: 1 cm: 7,5x52 ↑ C: ±130g / ±390g ⊙: ±6h Rhubarb scent	<b>FULLG26</b> u: 1 cm: 5,5x55 ↑ C: ±90g / ±390g ⊙: ±8h Rhubarb scent	<b>FULLP3</b> u: 1 cm: 9x48 ↑ C: ±120g / ±390g ⊙: ±4h Rhubarb scent	<b>FULLM3</b> u: 1 cm: 7,5x52 ↑ C: ±130g / ±390g ⊙: ±6h Rhubarb scent	<b>FULLG3</b> u: 1 cm: 5,5x55 ↑ C: ±90g / ±390g ⊙: ±8h Rhubarb scent	<b>FULLP22</b> u: 1 cm: 9x48 ↑ C: ±120g / ±390g ⊙: ±4h Rhubarb scent	<b>FULLM22</b> u: 1 cm: 7,5x52 ↑ C: ±130g / ±390g ⊙: ±6h Rhubarb scent	<b>FULLG22</b> u: 1 cm: 5,5x55 ↑ C: ±90g / ±390g ⊙: ±8h Rhubarb scent	<b>FULLP53</b> u: 1 cm: 9x48 ↑ C: ±120g / ±390g ⊙: ±4h Rhubarb scent	<b>FULLM53</b> u: 1 cm: 7,5x52 ↑ C: ±130g / ±390g ⊙: ±6h Rhubarb scent	<b>FULLG53</b> u: 1 cm: 5,5x55 ↑ C: ±90g / ±390g ⊙: ±8h Rhubarb scent
-------------------------------------------------------------------------------------	---------------------------------------------------------------------------------------	--------------------------------------------------------------------------------------	------------------------------------------------------------------------------------	--------------------------------------------------------------------------------------	-------------------------------------------------------------------------------------	-------------------------------------------------------------------------------------	---------------------------------------------------------------------------------------	--------------------------------------------------------------------------------------	-------------------------------------------------------------------------------------	---------------------------------------------------------------------------------------	--------------------------------------------------------------------------------------



<b>FULLPGR</b> u: 1 cm: 9x23 ↑ C: ±120g ⊙: ±4h Rhubarb scent *F/22	<b>FULLMGR</b> u: 1 cm: 7,5x27 ↑ C: ±130g ⊙: ±6h Rhubarb scent *F/22	<b>FULLGGR</b> u: 1 cm: 5,5x30 ↑ C: ±90g ⊙: ±8h Rhubarb scent *F/22	<b>FULLPGR</b> u: 1 cm: 9x23 ↑ C: ±120g ⊙: ±4h Rhubarb scent *F/22	<b>FULLMGR</b> u: 1 cm: 7,5x27 ↑ C: ±130g ⊙: ±6h Rhubarb scent *F/22	<b>FULLGGR</b> u: 1 cm: 5,5x30 ↑ C: ±90g ⊙: ±8h Rhubarb scent *F/22	<b>FULLPGR</b> u: 1 cm: 9x23 ↑ C: ±120g ⊙: ±4h Rhubarb scent *F/22	<b>FULLMGR</b> u: 1 cm: 7,5x27 ↑ C: ±130g ⊙: ±6h Rhubarb scent *F/22	<b>FULLGGR</b> u: 1 cm: 5,5x30 ↑ C: ±90g ⊙: ±8h Rhubarb scent *F/22	<b>FULLPGR</b> u: 1 cm: 9x23 ↑ C: ±120g ⊙: ±4h Rhubarb scent *F/22	<b>FULLMGR</b> u: 1 cm: 7,5x27 ↑ C: ±130g ⊙: ±6h Rhubarb scent *F/22	<b>FULLGGR</b> u: 1 cm: 5,5x30 ↑ C: ±90g ⊙: ±8h Rhubarb scent *F/22
--------------------------------------------------------------------------------------	----------------------------------------------------------------------------------------	---------------------------------------------------------------------------------------	--------------------------------------------------------------------------------------	----------------------------------------------------------------------------------------	---------------------------------------------------------------------------------------	--------------------------------------------------------------------------------------	----------------------------------------------------------------------------------------	---------------------------------------------------------------------------------------	--------------------------------------------------------------------------------------	----------------------------------------------------------------------------------------	---------------------------------------------------------------------------------------

\*Canelobres recomanats per a cada referència (col·lecció completa pàg.100)  
Candelabros recomendados para cada referencia (colección completa pág.100)  
Recommended candelholders for each reference (full collection p.100)



EXVPEU  
u: 1  
cm: 29x18,5↑  
C: +1140g



EXVMA  
u: 1  
cm: 10,5x18↑  
C: +270g



EXVNEN  
u: 1  
cm: 19,5x22,5↑  
C: +2100g



EXVDONA  
u: 1  
cm: 32,5x30↑  
C: +3870g





**FSCUBI**  
 u: 1  
 cm: 17x16↑  
 C: +1200g



(1)



(26)

**SCUBI**  
 u: 1  
 cm: 500  
 C: +310g  
 Ⓞ: +80h



**CLUS4512**  
u: 4  
cm: 4,5x12 ↑  
C: ±170g/u  
⊙: ±25h/u



**CLUS4520**  
u: 4  
cm: 4,5x20 ↑  
C: ±250g/u  
⊙: ±50h/u



**CLUS4525**  
u: 4  
cm: 4,5x25 ↑  
C: ±350g/u  
⊙: ±55h/u



**CLUS6012**  
u: 4  
cm: 6x12 ↑  
C: ±300g/u  
⊙: ±30h/u



**CLUS6020**  
u: 4  
cm: 6x20 ↑  
C: ±520g/u  
⊙: ±55h/u



**CLUS6025**  
u: 4  
cm: 6x25 ↑  
C: ±640g/u  
⊙: ±60h/u



**CLUS8012**  
u: 4  
cm: 8x12 ↑  
C: ±570g/u  
⊙: ±45h/u



**CLUS8020**  
u: 4  
cm: 8x20 ↑  
C: ±930g/u  
⊙: ±80h/u



**CLUS8025**  
u: 4  
cm: 8x25 ↑  
C: ±1170g/u  
⊙: ±85h/u



**CLUS1015**  
u: 1  
cm: 10,5x15 ↑  
C: ±1200g  
⊙: ±60h



**CLUS1020**  
u: 1  
cm: 10,5x20 ↑  
C: ±1540g  
⊙: ±80h



**CLUS1515**  
u: 1  
cm: 15,5x14,5 ↑  
C: ±2580g  
⊙: ±60h



**CLUS1525**  
u: 1  
cm: 15,5x24,5 ↑  
C: ±4190g  
⊙: ±100h





**CLUSQ510**  
u: 4  
cm: 5,5x5,5x10 ↑  
C: ±280g/u  
⊙: ±30h/u



**CLUSQ710**  
u: 4  
cm: 7,5x7,5x10 ↑  
C: ±540g/u  
⊙: ±40h/u



**CLUSQ515**  
u: 4  
cm: 5,5x5,5x15 ↑  
C: ±430g/u  
⊙: ±45h/u



**CLUSQ715**  
u: 4  
cm: 7,5x7,5x15 ↑  
C: ±790g/u  
⊙: ±60h/u



**CLUSQ523**  
u: 4  
cm: 5,5x5,5x23 ↑  
C: ±600g/u  
⊙: ±60h/u



**CLUSQ723**  
u: 4  
cm: 7,5x7,5x23 ↑  
C: ±1150g/u  
⊙: ±80h/u





**181**  
u: 4  
cm: 2,7x35↑  
C:±150g/u  
\*F/23



**180**  
u: 4  
cm: 2,9x26,5↑  
C:±115g/u  
⊙:±3h/u  
\*F/23



**32**  
u: 4  
cm: 2,5x24↑  
C:±54g/u  
⊙:±6h/u  
\*F/25



**49**  
u: 4  
cm: 2,5x22↑  
C:±40g/u  
⊙:±6h/u  
\*F/23



**51**  
u: 4  
cm: 2x15,5↑  
C:±25g/u  
⊙:±3h/u  
\*F/23



**161**  
u: 4  
cm: 2,5x32↑  
C:±150g/u  
⊙:±7h/u  
\*F/23



**162**  
u: 4  
cm: 2,5x25↑  
C:±75g/u  
⊙:±4,5h/u  
\*F/23



**G16**  
u: 4  
cm: 2,2x31↑  
C:±75g/u  
⊙:±8h/u  
\*F/25



**26**  
u: 4  
cm: 2,2x28↑  
C:±50g/u  
⊙:±7h/u  
\*F/22



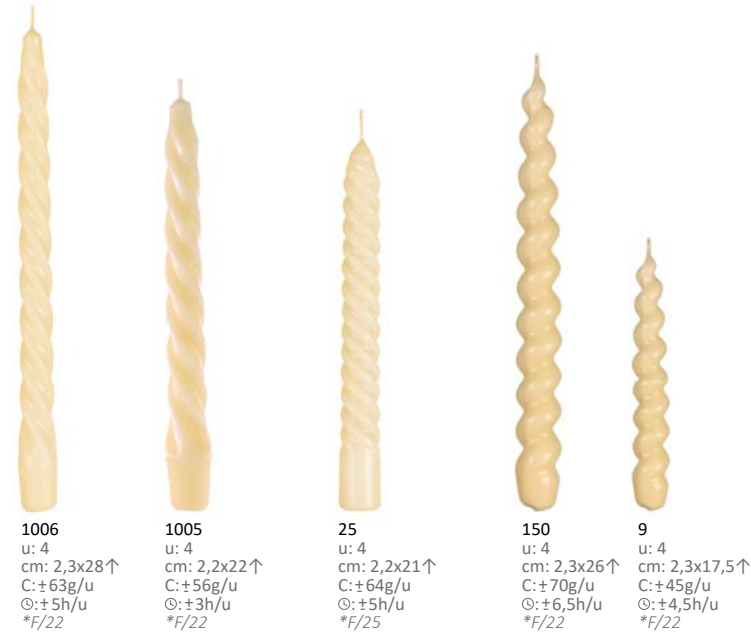
**24**  
u: 4  
cm: 2x24↑  
C:±40g/u  
⊙:±4h/u  
\*F/22



**G12**  
u: 4  
cm: 1,7x19,5↑  
C:±30g/u  
⊙:±3h/u

\*Canelobres recomanats per a cada referència (col·lecció completa pàg.100)  
Candelabros recomendados para cada referencia (colección completa pág.100)  
Recommended candelholders for each reference (full collection p.100)





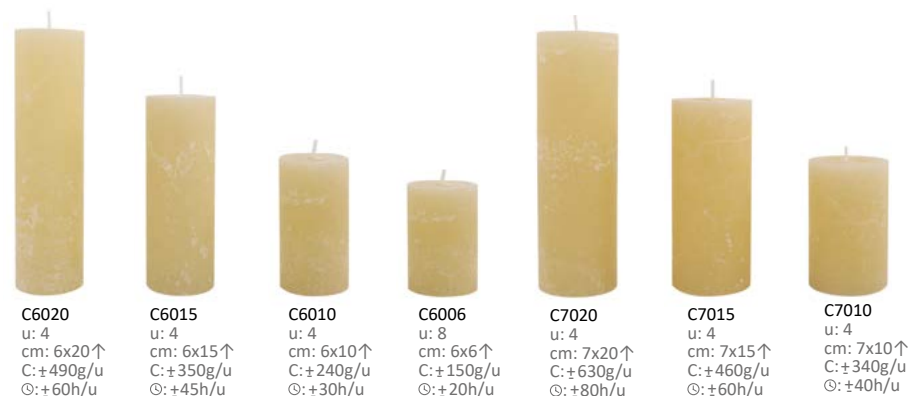
\*Canelobres recomanats per a cada referència (col·lecció completa pàg.100)  
Candelabros recomendados para cada referencia (colección completa pág.100)  
Recommended candleholders for each reference (full collection p.100)







RUSTIC CANDLES



COLORS



\*Candelobres recomanats per a cada referència (col·lecció completa pàg.100)  
Candelabros recomendados para cada referencia (colección completa pág.100)  
Recommended candelholders for each reference (full collection p.100)